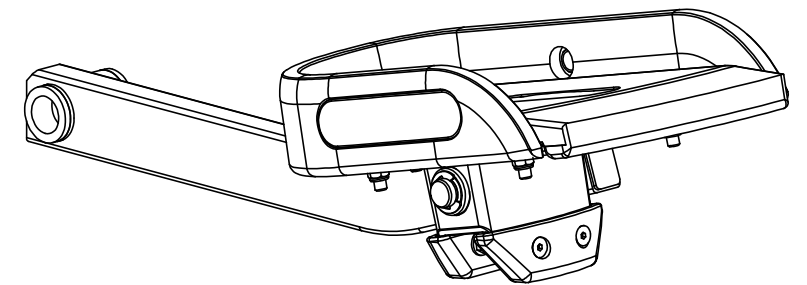
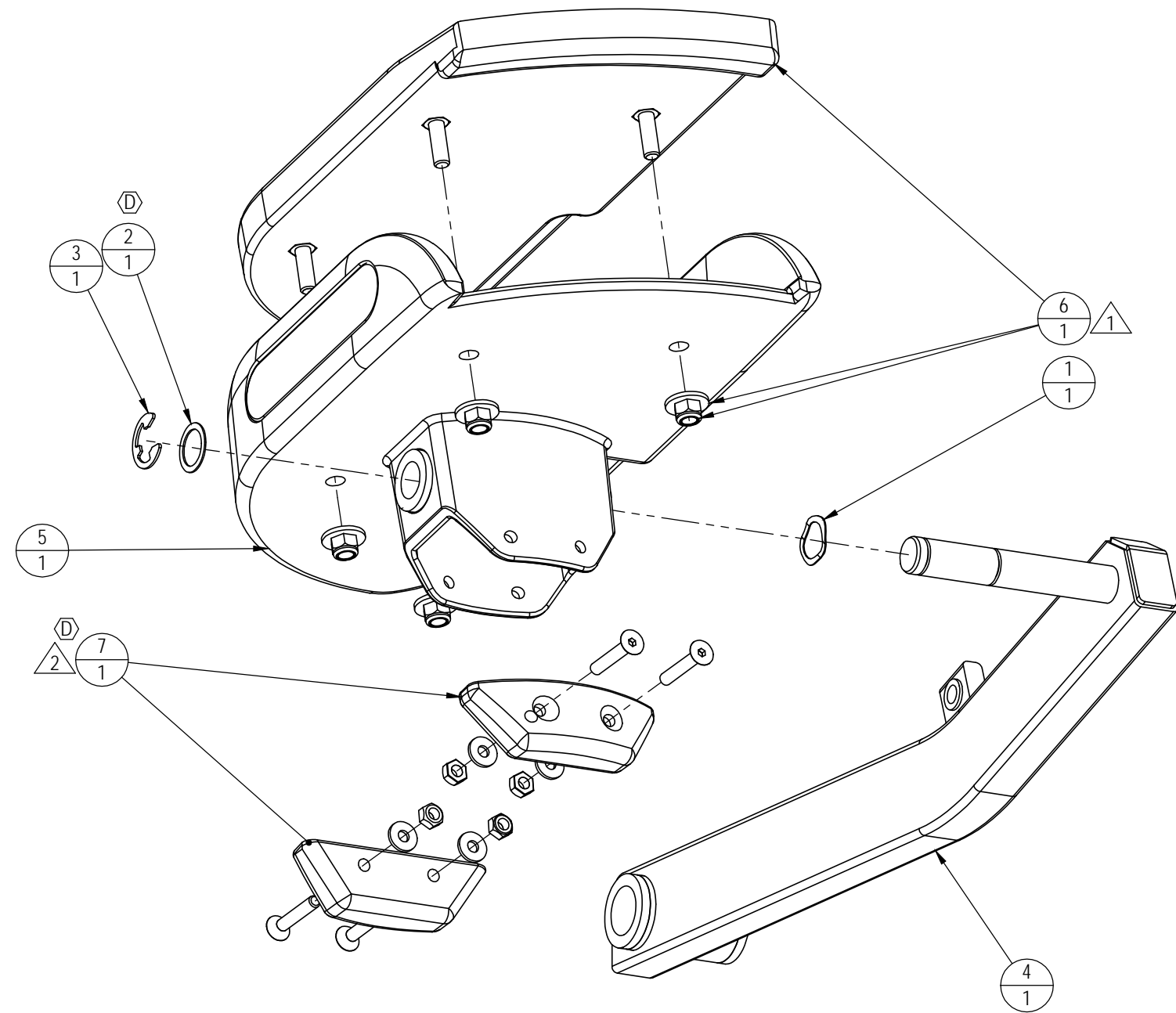


REVISIONS				
REV.	DATE	DESCRIPTION	ECO	BY
A	9/27/05	PRODUCTION RELEASE	11349	FP
B	8/16/06	ADD P/N: 120-0505 , 120-3015 , 140-0940 ; DELETE P/N: 711-3175	11476	FJM
C	04-29-09	ADD TORQUE SPEC OF 120 IN-LB TO NOTE 1.	12089	SCN
D	10-21-09	CHG QTY OF 120-3015 WAS 2 IS 1; ADD NOTE #2	12301	SCN



ITEM NO.	PART NUMBER	DESCRIPTION	QTY.
1	120-0505	WASHER, WAVE 3/4" ID	1
2	120-3015	STEEL SHIM, .75ID X 1.125 OD	1
3	140-0940	E-CLIPS, 3/4" ID	1
4	711-3173-01	ASSY, PEDAL ARM, W/BUSHING, LEFT	1
5	711-3174-01	ASSY, PEDAL, W/BUSHING, LEFT	1
6	711-3176-01	KIT, PEDAL PAD, LEFT	1
7	711-3177	KIT, PEDAL STOPS, 5100 STEPPER	1

**DOCUMENT STATUS:
RELEASE**

NOTICE OF PROPRIETARY INFORMATION

THIS DOCUMENT SHALL NOT BE REPRODUCED NOR SHALL THE INFORMATION CONTAINED HEREIN BE USED BY OR DISCLOSED TO OTHER EXCEPT AS EXPRESSLY AUTHORIZED BY UNISEN INC, D.B.A. STAR TRAC.

THIRD ANGLE PROJECTION



MATERIAL
SEE BOM

FINISH
N/A

VENDOR:

P/N:

UNLESS OTHERWISE SPECIFIED DIMENSIONS ARE IN INCHES. TOLERANCES ARE:
DECIMALS X. = ±.13
X.X = ±.05
X.XX = ±.03
X.XXX = ±.010

DRAWN	FP	DATE	09-15-05
CHECKED			
APPROVED			

U.O.M. INCH

UNISEN, INC. DBA



14410 Myford Road
Irvine CA 92606

STARTRAC PART NO

711-1045-01

REV

D

TITLE
PEDAL ARM, LEFT, STEPPER

SCALE: 1:3 | SHEET 1 OF 1 | SHEET SIZE: B

NOTES: (D)

- TORQUE TO 120 IN-LB/ 10 FT-LB/ 13.6 Nm
- TIGHTEN HARDWARE SNUGLY TO RUBBER PADS WITHOUT DEFORMING RUBBER